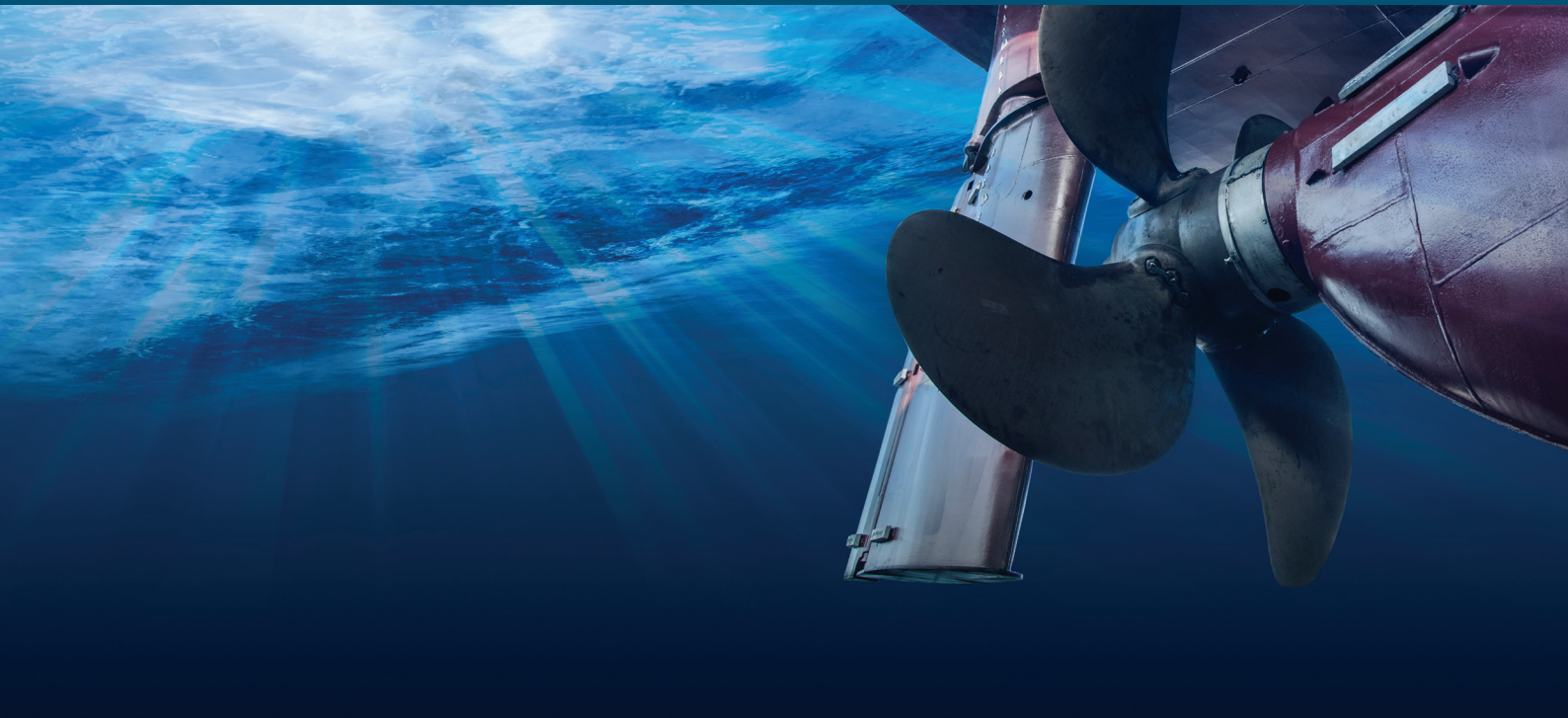


Edition  
2020

# Soromap



Anodes  
*Anodes*

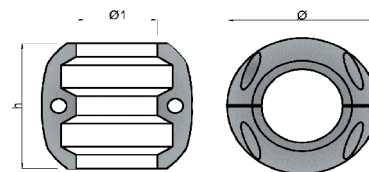


**SOROMAP**  
Fait en France

## Anodes standards / Standard anodes

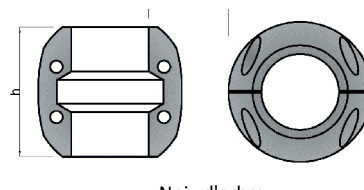
### ↳ Noix d'arbre / Bracelet anode for shafts

Référence	Poids /kg	Ø d'arbre	Ø	Ø1	h	Trous
62000	0.355	19	58	19	55	2
62001	0.30	20	49	20	40	2
62002	0.49	22	58	22	55	2
62004	0.285	22	50	22	40	2
62006	0.47	25	58	25	55	2
62008	0.255	25	50	25	40	2
62010	0.45	25,4	59	25.4	55	2
62012	0.43	28	58	28	55	2
62014	0.44	28,5	59	28.5	55	2
62016	0.41	30	58	30	55	2
62018	0.39	31,7	59	31.7	55	2
62020	0.61	34	62	34	63	2
62022	0.59	35	63	35	64	2



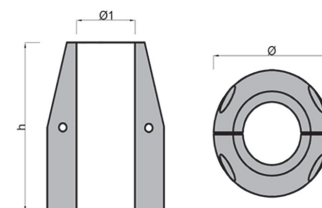
### ↳ Noix d'arbre / Bracelet anode for shafts

Référence	Poids /kg	Ø d'arbre	Ø	Ø1	h	Trous
62024	0.76	38	70	38	70	4
62025	1.54	44,4	85	44.4	89	4
62026	0.7	40	67	40	69	4
62027	1.51	45	84	45	89	4
62028	1.35	50	84	50	89	4
62650	1.30	50,8	90	50,8	89	4
62652	3.2	50/60	110	55	110	4
62654	3	55	109	55	109	4
62656	2.95	57,1	109	57.1	109	4
62658	3.2	60	110	60	108	4
62660	3.65	63,5	116	63.5	89	4
62662	3.65	65	116	65	89	4
62664	3.30	70	118	70	89	4



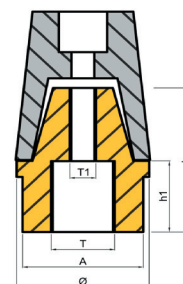
### ↳ Noix d'arbre profilée / Profiled shaft anodes

Référence	Poids /kg	Ø d'arbre	Ø	Ø1	h
62090	0.85	22	59	22	82
62091	0.8	25	59	25	82
62092	0.68	30	59	30	82



### ↳ Embout conique radice complet / Complete radice tapered end-fitting

Référence	Poids /kg	Ø d'arbre	Ø1	Ø	T	T1	h	h1
62030	0.14	22/25	26	34	M16 x 1.5	M6	38	21
62031	0.29	30	32	43	M20 x 1.5	M8	46	23
62032	0.53	40	52	52	M24 X 1.5	M8	49	23

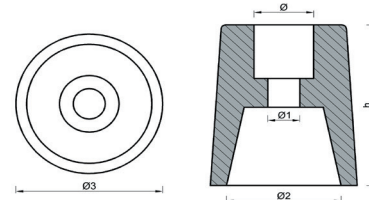


! Toutes les mesures sont en mm / All measurements are in mm

## Anodes standards / Standard anodes

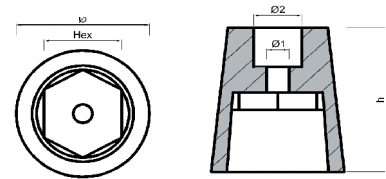
### ↳ Embout conique radice / Conic ogive for pop nut

Référence	Poids /kg	Ø d'arbre	Ø	Ø1	Ø2	Ø3	h
62040	0.135	Ø22/Ø25	12.5	7	25	33	39
62042	0.29	Ø30	17.5	8.5	31	42	54
62044	0.41	Ø35	17.5	8.5	38	47	60
62046	0.53	Ø40	17.5	8.5	41	50	68
62048	0.89	Ø45	20	10.5	47	61	76
62050	1.20	Ø50	20	10.5	57	69	84
62052	1.77	Ø60	20	10.5	71	83	100



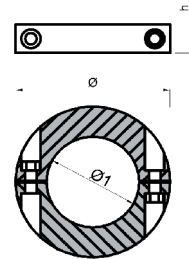
### ↳ Embout conique radice 6 pans / Conic ogive for pop nut hexagonal

Référence	Poids /kg	Ø d'arbre	Ø	Ø1	Ø2	Hex	h
62055	0.12	Ø22/Ø25	33	7	13	22.5	39
62056	0.26	Ø30	42	7.5	17	27	54
62057	0.35	Ø35	47	8.5	17	33	60
62058	0.47	Ø40	50	8.5	17	37	68
62059	2.06	Ø45	61	11	20	42	77
62054	0.99	Ø50	69	10.5	20	48	85



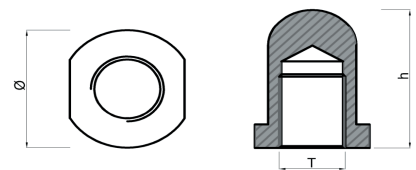
### ↳ Collier / Collar

Référence	Poids /kg	Ø	Ø1	h
62100	0.23	60	20	18.2
62102	0.25	60	22	18.2
62104	0.25	60	25	18.2
62106	0.265	68	30	16
62108	0.25	68	35	16
62110	0.285	72	40	17
62112	0.25	72	45	17
62114	0.41	80	50	20



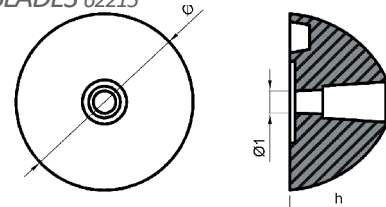
### ↳ Embout d'arbre à visser / Threaded shaft nut

Référence	Poids /kg	Ø d'arbre	Ø	T	h
62060	0.07	22/25	27	M16 x 200	36.5
62062	0.16	28/34	45	M20 x 250	49
62064	0.23	40	40	M28 x 250	48
62065	0.23	40	45	M20 x 250	49



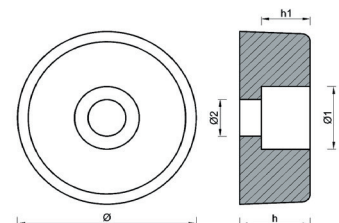
### ↳ Embout FLEX O FOLD 65mm 3 BLADES 62215 / FLEX O FOLD 65mm 3 BLADES 62215

Référence	Poids /kg	Ø	T	h
62215	0.51	65	8,5	36



### ↳ Embout FLEX O FOLD 062216 2 BLADES / FLEX O FOLD 062216 2 BLADES

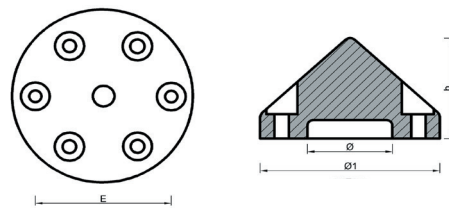
Référence	Poids /kg	Ø	Ø1	Ø2	h	h1
62216	0.06	32	12	7	13	9



## Anodes standards / Standard anodes

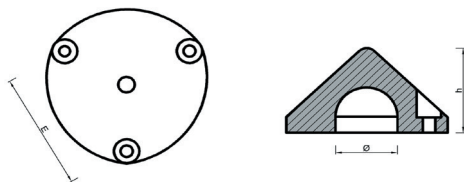
### ↳ Embout Max Prop 6 trous / Specific anode Max Prop 6 holes

Référence	Poids /kg	Ø d'arbre	Ø	Ø1	E	h
62151	0.5	70	42	69	57	41



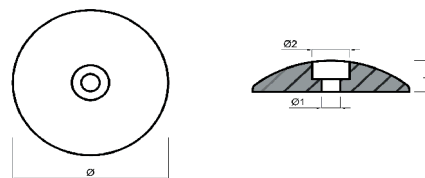
### ↳ Embout Max Prop 3 trous / Specific anode Max Prop 3 holes

Référence	Poids /kg	Ø d'arbre	Ø	E	h
62150	0.39	63	38	46	43
62152	0.98	83	46	60	60
62153	1.26	100	52	72	60



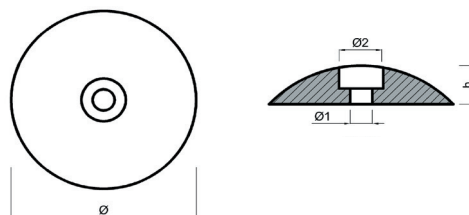
### ↳ Rosace / Flange anode for rudders

Référence	Poids /kg	Ø	Ø1	Ø2	h
62078	0.15	50	7	17	9.5
62080	0.48	74	10	20	10.5
62082	0.72	90	10	20	11.5
62084	1.3	108	10	20	16
62088	2.8	128	10	25	21



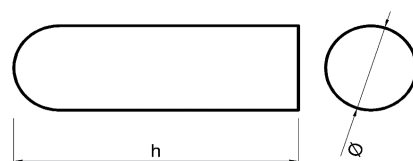
### ↳ Rosace ECO / Eco Flange anode for rudders

Référence	Poids /kg	Ø	Ø1	Ø2	h
91487	0.08	50	6,5	20	11
91488	0.19	70	8,5	22	13
91489	0.42	90	8,5	31	18
91490	0.68	110	11	30	18
91491	0.98	125	11	30	21
62086	1.5	108	8.5	16	10



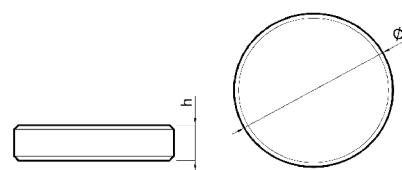
### ↳ Rond / Rod anode

Référence	Poids /kg	Ø	h
62199	0.19	12	250
62195	0.27	14	250
62198	0.35	16	250
62189	0.45	18	250
62211	0.77	22	250
62197	0.86	25	250
62196	1.29	30	250
62183	1.61	35	250
62192	2.15	40	250
62193	3.39	50	250
62209	30	150	250



### ↳ Anode circulaire / Disk anode

Référence	Poids /kg	Ø	h
62188	4.27	200	50

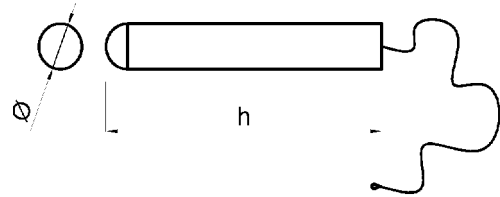


! Toutes les mesures sont en mm / All measurements are in mm

## Anodes standards / Standard anodes

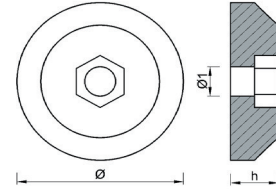
### ↳ Anode à pendre / Temporary suspended anode

Référence	Poids /kg	Ø	h	Longueur du câble
62130	1.9	30	350	3m



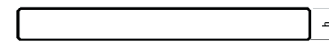
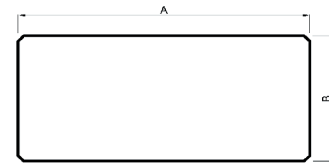
### ↳ Embout hélice "Bec de canard" / Duckbill propeller shaft anode

Référence	Poids /kg	Ø	Ø1	h
62175	0.05	35	6.5	10



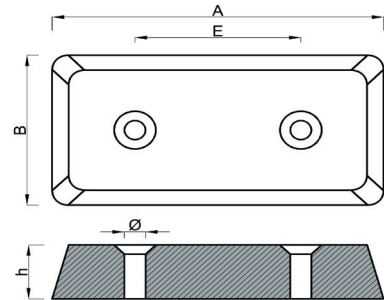
### ↳ Plaque à usiner / Plate

Référence	Poids /kg	A	B	h
62600	1.36	100	75	25
62173	1.92	150	75	25
62606	2.6	300	150	10
62602	4.22	300	150	15
62608	5.85	300	150	20
62604	7.4	300	150	25

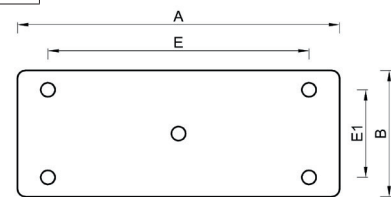
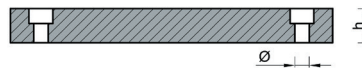


### ↳ Plaque à visser / Screw on plate

Référence	Poids /kg	A	B	Ø	E	h	Nbre de trous
62154 & 62324	0.24	65	65	7	50	10	2
62610	0.26	98	45	5	50	8	2
62172	0.52	100	50	6	50	18	2



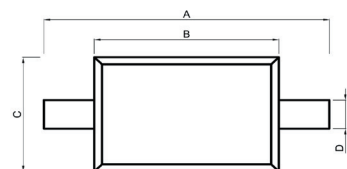
Référence	Poids /kg	A	B	Ø	E	E1	h	Nbre de trous
62155	0.91	155	65	7	112	40	15	5



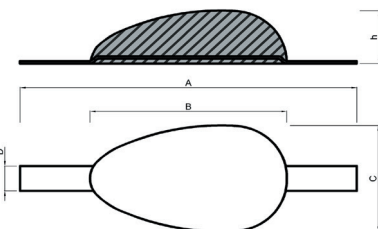
### ↳ Anodes à souder / Welding anodes

#### ↳ Embout Max Prop / Specific anode Max Prop

Référence	Poids /kg	A	B	C	D	h	Type
62136	0.96	150	75	80	20	22	Anode
62601	4.07	300	150	150	30	25	Plaque
62143	5.82	365	250	100	40	40	Anode
62145	6.19	370	240	105	40	40	Anode



Référence	Poids /kg	A	B	C	D	h	Type
62137	1	210	115	70	20	40	Anode
62140	1.37	210	115	72	20	43	Anode
62144	2.4	270	140	90	30	50	Anode
62171	3.56	295	170	100	30	60	Anode
62146	7.54	370	235	130	40	55	Anode
62171P	3.5	295	170	100	230	60	Anode



! Toutes les mesures sont en mm / All measurements are in mm

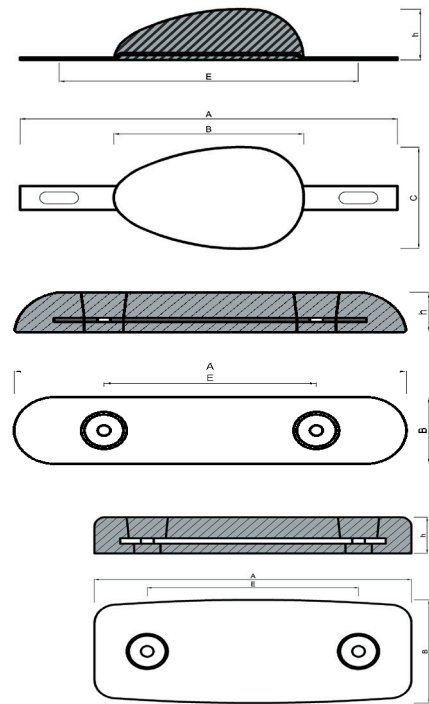
## Anodes standards / Standard anodes

### ↳ Anode à boulonner / Bolt on plates

Référence	Poids /kg	A	B	C	E	h
62138	1.27	220	100	70	195	45
62148	2.24	270	150	90	230	50
62171P	3.5	295	170	100	230	60

Référence	Poids /kg	A	B	E	h
62147	2.93	300	65	200	30
62149	12	450	100	230	50

Référence	Poids /kg	A	B	E	h
62139	5.9	275	100	230	37

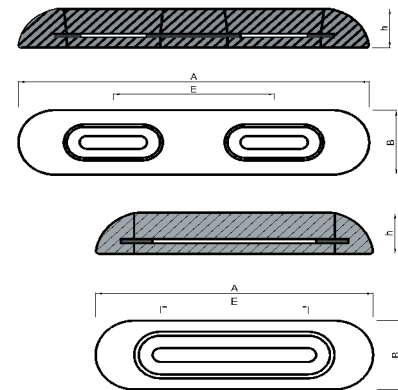


### ↳ Pas variable / Variable thread

Référence	Poids /kg	A	B	E	h
62142	3	300	75	155	40

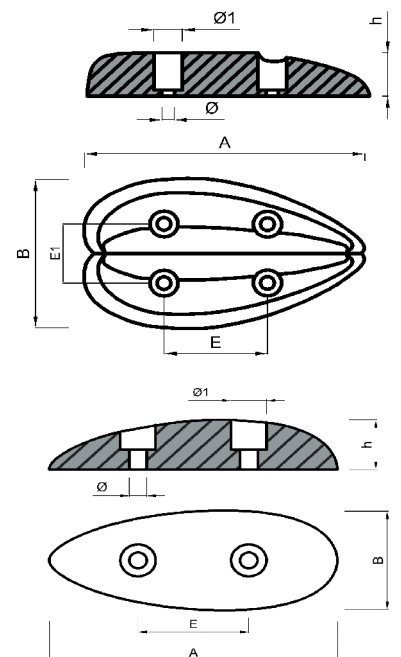
### ↳ Pas variable / Variable thread

Référence	Poids /kg	A	B	E	h
62132	1.3	175	55	100	25



### ↳ Anode Cœur / Heart anode

Référence	Poids /kg	A	B	Ø	Ø1	F	F1	h
62157	0.45	112	76	10	6	40	28	19



### ↳ Anode ovaler / Oval anode

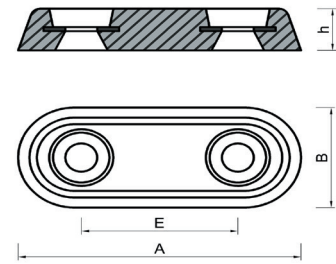
Référence	Poids /kg	A	B	Ø	Ø1	E	h
62161	0.235	100	40	6	10	50	18
62163	0.49	130	50	6	10	50	30

! Toutes les mesures sont en mm / All measurements are in mm

## Anodes standards / Standard anodes

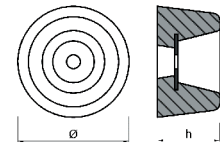
### ↳ Anode Plaque Vetus / Vetus anode Plate

Référence	Poids /kg	A	B	E	h
62450	0.99	150	60	80	25
62452	2.33	250	65	145	30



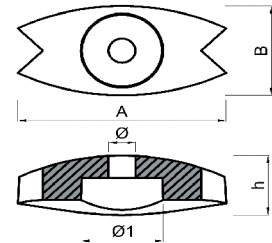
### ↳ Anode Vetus type 8 / Vetus anode type 8

Référence	Poids /kg	Ø	h
62185	1.17	80	45



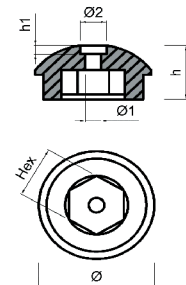
### ↳ Anode Volco QL / Volco QL anode

Référence	Poids /kg	A	B	Ø	Ø1	h
62179	0.07	50	25	6.5	19.6	16



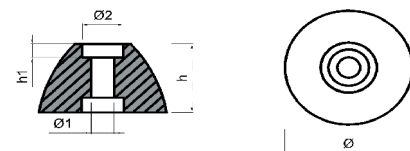
### ↳ Anode side power GM / GM Side power anode

Référence	Poids /kg	Ø	Ø1	Ø2	Hex	h	h1
62181	0.108	44	6.5	10.5	19	19	3.7



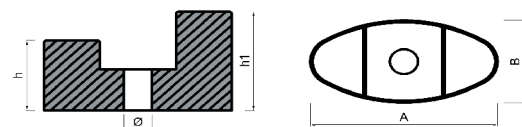
### ↳ Anode side power / Side power anode

Référence	Poids /kg	Ø	Ø1	Ø2	h	h1
62191	0.03	25	4.6	8.5	15	3.5



### ↳ Anode Propulseur Vetus / Vetus Propellant anode

Référence	Poids /kg	A	B	Ø	h	h1
62214	0.066	40	20.3	6	17	24



### ↳ Anode Propulseur Vetus / Vetus Propellant anode

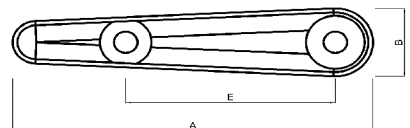
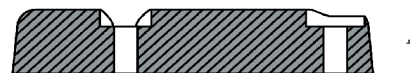
Référence	Poids /kg	A	B	Ø	h	h1
62214	0.066	40	20.3	6	17	24

! Toutes les mesures sont en mm / All measurements are in mm

## Anodes moteur / Engine anodes

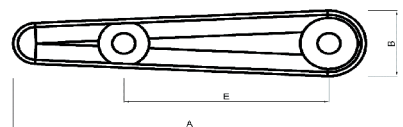
### ↳ Plaque PM / Small plate

Référence	Poids /kg	A	B	E	h
62550	0.54	2	32	89	30



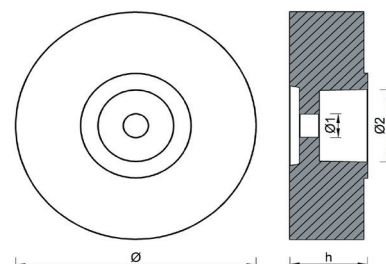
### ↳ Plaque GM / Large plate

Référence	Poids /kg	A	B	E	h
62552	1.67	192	45	132	45



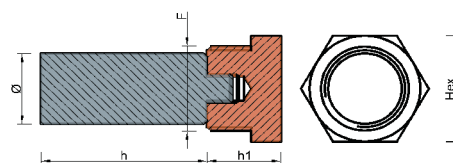
### ↳ Colerette Baglicto / Baglicto Wheel

Référence	Poids /kg	Ø	Ø1	Ø2	h
62554	2.93	125	13	40	40
62556	4.3	150	13	39	40



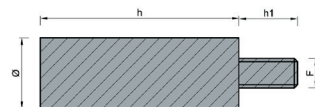
### ↳ Bougie complète Baudoin / Baudoin Plug

Référence	Poids /kg	Ø	Hex	F	h	h1
62530	0.20	20	30	M24 x 2	45	20



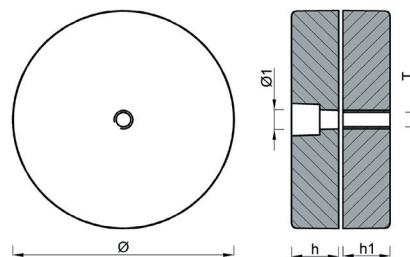
### ↳ Recharge Baudoin / Baudoin Refill

Référence	Poids /kg	Ø	F	h	h1
62532	0.17	20	M8	45	10



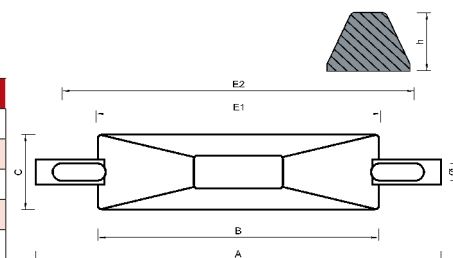
### ↳ Tenderlift - Plateforme type H+B Technics / Tenderlift - H+B Technics type platform

Référence	Poids /kg	Ø	Ø1	T	h	h1
62089T tauraudée	1	94	13	M8	20	20
62089NT non tauraudée	1	94	13	M8	20	20



### ↳ BERA / Bera

Référence	Poids /kg	A	B	C	Ø	E1	E2	h
62512	0.25	168	80	35	7	107	132	15
62513	0.5	166	100	46	7	114	145	26
62514	0.8	210	140	62	9	178	208	28
62515	2	210	180	90	9	178	208	30
62516	2.82	300	220	100	18	238	259	29



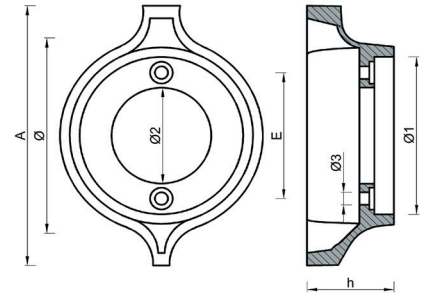
! Toutes les mesures sont en mm / All measurements are in mm



## Anodes moteur / Engine anodes

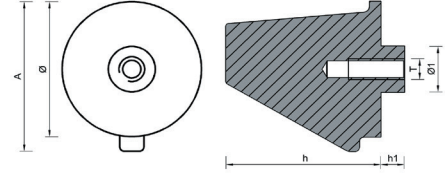
### ↳ Colerette embase / Outdrive ring

Référence	Poids /kg	A	∅	∅1	∅2	∅3	E	h
62160	0.86	164	125	101	60	8	80	53



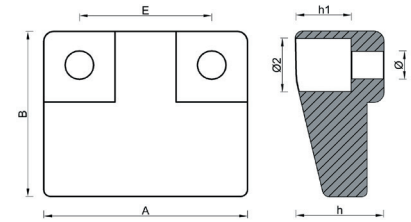
### ↳ Queue de carpe / Skeg

Référence	Poids /kg	A	∅	∅1	T	h	h1
62162	0.34	74	64	22	M10	73	11



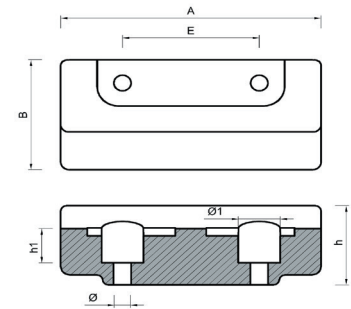
### ↳ Plaque BM / BM Plate

Référence	Poids /kg	A	B	∅	∅1	E	h	h1
62166	0.32	60	49	8	16	40	26	16.5



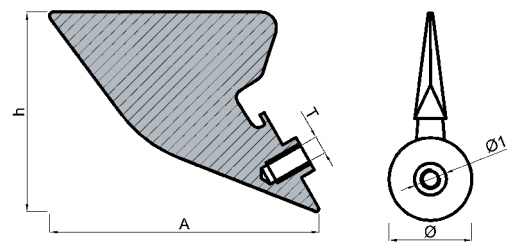
### ↳ Barreau BM / BM Bar

Référence	Poids /kg	A	B	∅	∅1	E	h	h1
62168	0.93	118	52	8	19	62	40	12



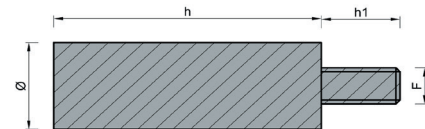
### ↳ Queue de carpe longue / Long skeg

Référence	Poids /kg	A	∅	∅1	T	h
62170	0.605	145	64	22	M10	110



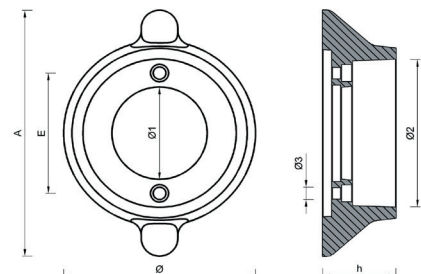
### ↳ Bougies / Plugs

Référence	Poids /kg	∅	F	h	h1
62522	0.03	11	3/16" UNC	34	10
62524	0.04	12	3/8" UNC	37	10



### ↳ Colerette embase Lukh / Lukh Outdrive Ring

Référence	Poids /kg	A	∅	∅1	∅2	∅3	E	h
62520	0.8	139	105	50	84	7	68	40

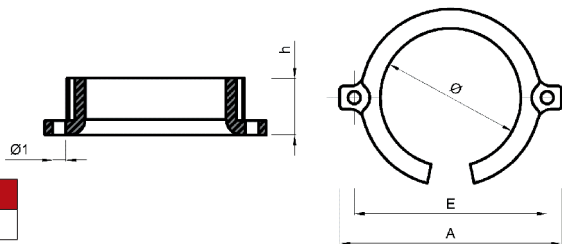


! Toutes les mesures sont en mm / All measurements are in mm

## Anodes moteur / Engine anodes

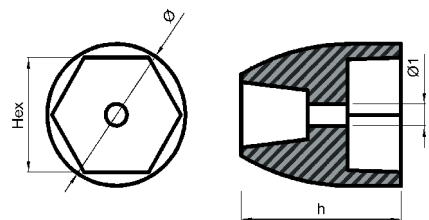
### ↳ Anneau / Ring

Référence	Poids /kg	A	Ø	Ø1	E	h
62037	0.16	85	54	5	70.5	22



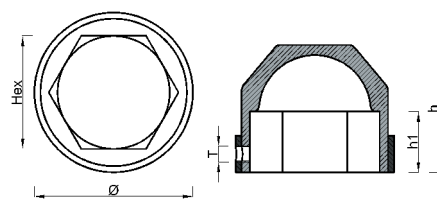
### ↳ ECR Mercury / ECR Mercury

Référence	Poids /kg	Ø	Ø1	Hex	h
62047	0,515	53	8,5	40	60



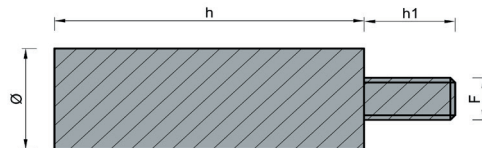
### ↳ Nuts / Nuts

Référence	Poids /kg	Ø d'arbre	Ø	Hex	T	h	h1
62070	0.19	25	42	27	M6	36	16
62071	0.2	30	41	31	M6	46	21
62072	0.23	33	46	35	M6	47	20
62073	0.47	36	54	36	M6	52	24
62074	0.49	41	53	43	M6	49	20
62075	0.5	50	65	52	M8	60	32
62076	0.6	55	73	57	M8	62	39
62077	1.58	65	99	67	M8	76	46



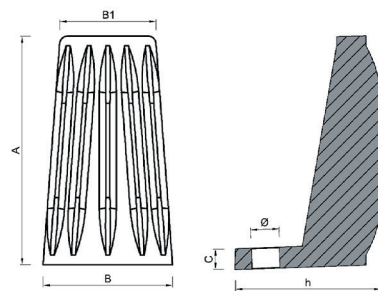
### ↳ Bougies / Plugs

Référence	Poids /kg	Ø	F	h	h1
62174 & 62164 & 62412	0.045	13	3/8" UNC	42	10
62176	0.095	16	3/8" UNC	63	13
62178	0.11	16	3/8" UNC	76	13
62180	0.33	31	3/4" UNC	55	20
62182	0.03	10	1/4" UNC	57	11
62184	0.07	22	5/8" UNC	20	13



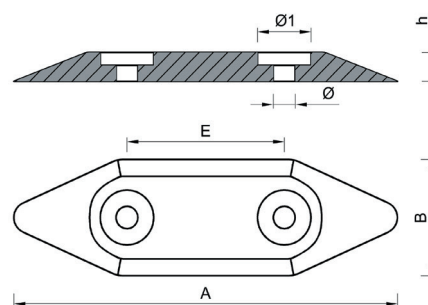
### ↳ Plaque / Plate

Référence	Poids /kg	A	B	B1	C	Ø	h
62558	0.84	120	68	50	10	15	75



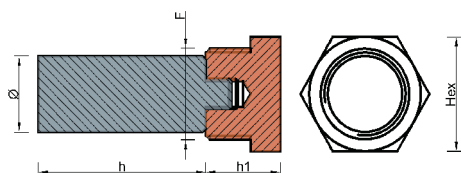
### ↳ Plaque HB / Outboard plate

Référence	Poids /kg	A	B	Ø	Ø1	E	h
62194	0.156	122	35	7	17	50	9



### ↳ Bougie / Plug

Référence	Poids /kg	Ø	Hex	F	h	h1
62190	0.135	16	23	1/2 gaz	57	19

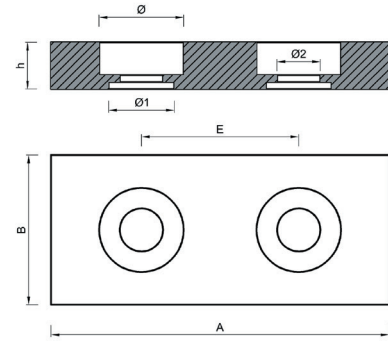


! Toutes les mesures sont en mm / All measurements are in mm

## Anodes moteur / Engine anodes

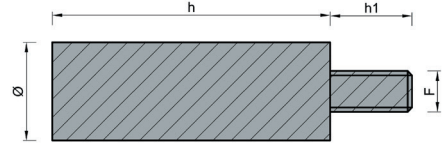
### ↳ Plaque / Plate

Référence	Poids /kg	A	B	∅	∅1	∅2	E	h
62526	1.1	144	64	36	28	18	67	21

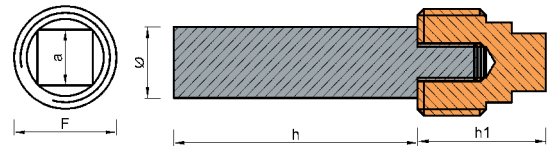


### ↳ Bougies / Plugs

Référence	Poids /kg	∅	F	h	h1
62220 & 62410	0.06	16	7/16" UNC	37	10
62222	0.2	20	7/16" UNC	82	16
62226	0.18	20	M8	78	12

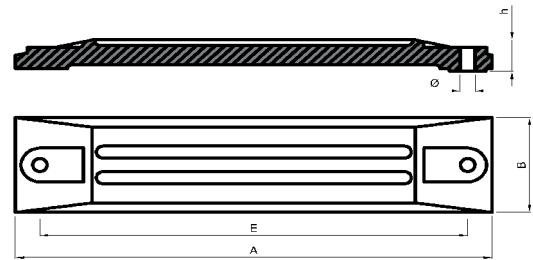


Référence	Poids /kg	∅	a	F	h	h1
62223	0.12	15	13	M24 x 2	88	30
62224	0.24	20	13	M24 x 2	80	30



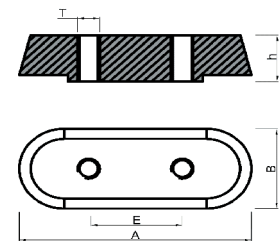
### ↳ Plaque HONDA / HONDA plate

Référence	Poids /kg	A	B	∅	E	h
62525	0.39	150	36	7	126	16
62527	0.86	224	50	7	200	17



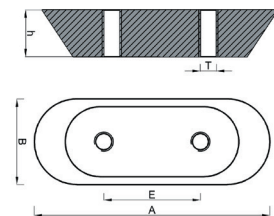
### ↳ Plaque HB / Outboard plate

Référence	Poids /kg	A	B	T	E	h
62528	0.08	60	22	M6	25	14



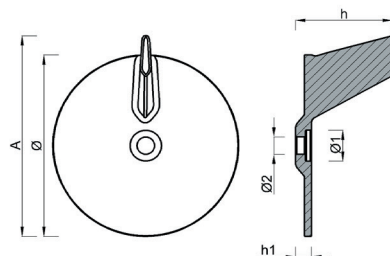
### ↳ Plaque HB JOHNSON - EVINRUDE / JOHNSON - EVINRUDE Outboard plate

Référence	Poids /kg	A	B	T	E	h
62230	0.08	61	22	M5	25	12



### ↳ Queue de carpe / Skeg

Référence	Poids /kg	A	∅	∅1	∅2	h	h1
62529	0.23	101	94	16	9	48	3.5

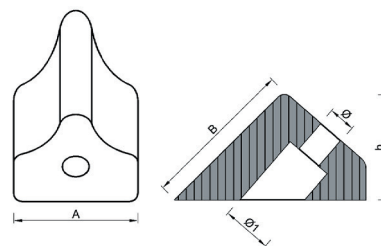


! Toutes les mesures sont en mm / All measurements are in mm

## Anodes moteur / Engine anodes

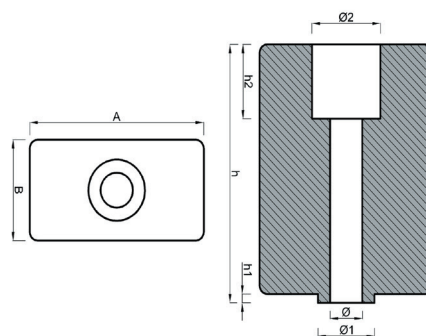
### ↳ Plaque HB NM / Outboard plate NM

Référence	Poids /kg	A	B	∅	∅1	h
62232	0.068	30	37	6,4	12	26



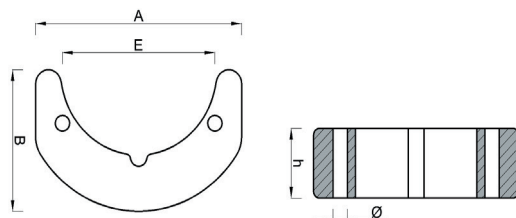
### ↳ Cube 60 à 280 cv / Cube 60 to 280 hp

Référence	Poids /kg	A	B	∅	∅1	∅2	h	h1	h2
62234	0.32	43	23	8	14	16	58	2	16



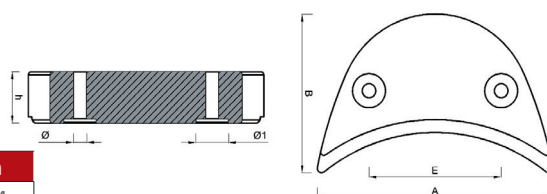
### ↳ CVL 50 à 75 cv / CVL 50 to 75 hp

Référence	Poids /kg	A	B	∅	E	h
62236	0.64	100	63	6.5	74	31



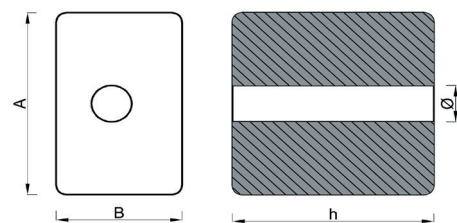
### ↳ Plaque 90 à 140 cv / Plate 90 to 140 hp

Référence	Poids /kg	A	B	∅	∅1	E	h
62238	0.83	116	77	7	16	63	24



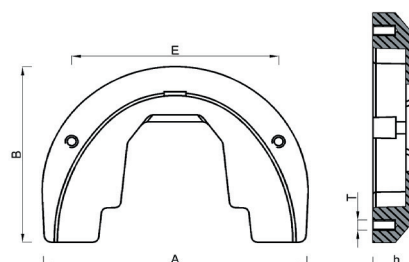
### ↳ Cube 50 à 140 cv / Cube 50 to 140 hp

Référence	Poids /kg	A	B	∅	h
62240	0.25	40	25	8	40



### ↳ Plaque IB 90 cv / Inboard plate 90 hp

Référence	Poids /kg	A	B	T	E	h
62242	0.74	145	102	M6	113	25

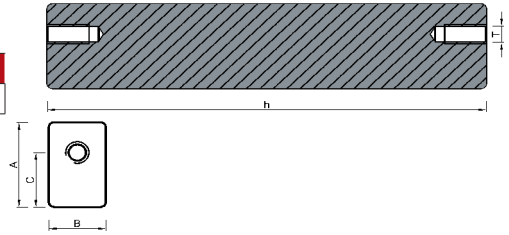


! Toutes les mesures sont en mm / All measurements are in mm

## Anodes moteur / Engine anodes

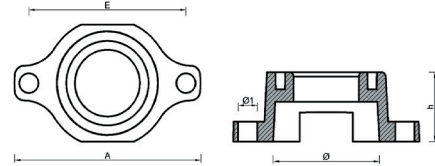
### ↳ Barrette 60/175 cv / Bar 60/175 hp

Référence	Poids /kg	A	B	C	T	h	h1
62246	0.91	35	22	17	5/16-18 UNC	169	14



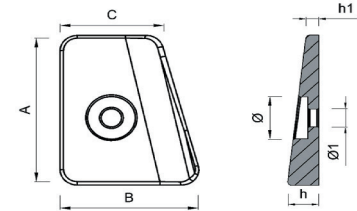
### ↳ Colerette ap.91 - 25/35/40 cv / Ring after 91 - 25/35/40 hp

Référence	Poids /kg	A	Ø	Ø1	E	h
62248	0.15	77	44	8	65	28



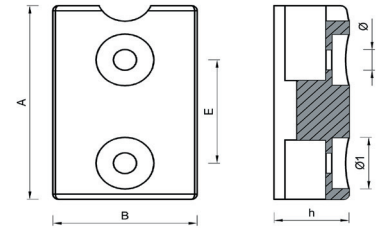
### ↳ Double plaque embase ap. 90 / Double wedge after 90

Référence	Poids /kg	A	B	C	Ø	Ø1	h	h1
62250	0.18	49	42	31	15	6	10	6.5



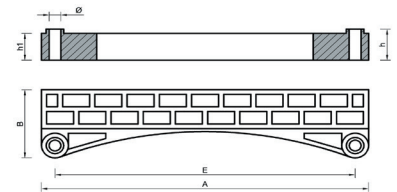
### ↳ Plaquette embase / Outdrive plate

Référence	Poids /kg	A	B	Ø	Ø1	E	h
62252	0.295	75	50	9	20	40	23



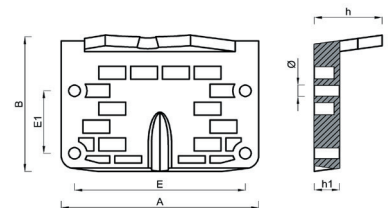
### ↳ Barrette alvéolée / Honeycomb bar

Référence	Poids /kg	A	B	Ø	E	h	h1
62254	0.50	193	43	6,5	178	19	16



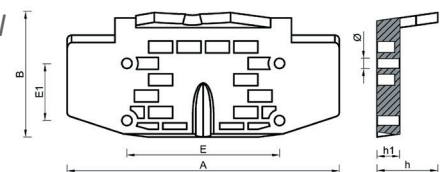
### ↳ Plaque alvéolée carter / Housing honeycomb block

Référence	Poids /kg	A	B	Ø	E	E1	h	h1
62256	0.71	118	84	7	102	41	40	15



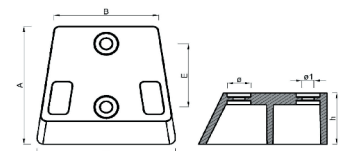
### ↳ Plaque alvéolée carter GM / Housing honeycomb block - large model

Référence	Poids /kg	A	B	Ø	E	E1	h	h1
62258	1.09	182	84	7	102	41	40	15



### ↳ Plaque embase cobra 130 => 380 / Lower outdrive block 130 => 380

Référence	Poids /kg	A	B	C	E	h	Ø	Ø1
62260	1.3	109	87	110	55	47	20	10

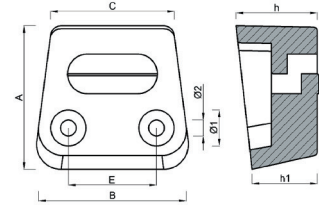


! Toutes les mesures sont en mm / All measurements are in mm

## Anodes moteur / Engine anodes

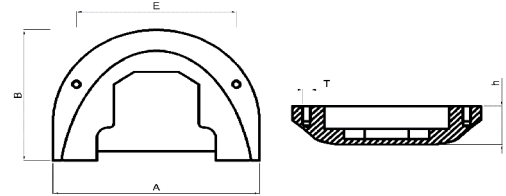
### ↳ Bloc King Cobra et SX / Block King Cobra and SX

Référence	Poids /kg	A	B	C	Ø1	Ø2	E	h	h1
62261 & 62442	1.075	80	90	72	20	9	50	46	38



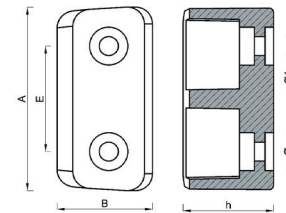
### ↳ Plaque sup. embase Cobra / Upper outdrive plate Cobra

Référence	Poids /kg	A	B	T	E	h
62262	0.98	146	102	M6	113	38



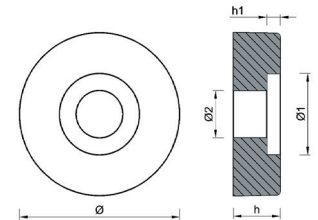
### ↳ Sous embase Cobra 90 et ap. / Lower outdrive Cobra - 90 and after

Référence	Poids /kg	A	B	Ø	Ø1	E	h
62264	0.6	90	46	9	20	50	41



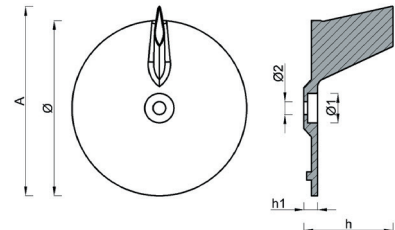
### ↳ Rondelle 2/25 cv / Washer 2/25 hp

Référence	Poids /kg	Ø	Ø1	Ø2	h	h1
62280 & 62466	0.02 0.14	24	12	7	7	2



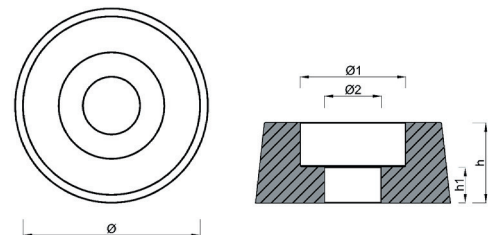
### ↳ Queue de carpe 28 cv / Skeg 28 hp

Référence	Poids /kg	A	Ø	Ø1	Ø2	h	h1
62282	0.24	102	95	16	7	48	6



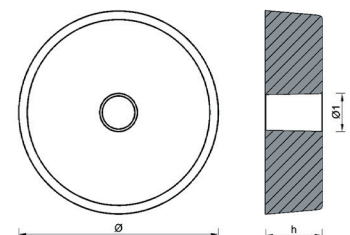
### ↳ Rondelle Ø 20 mm / Washer Ø 20 mm

Référence	Poids /kg	Ø	Ø1	Ø2	h	h1
62390 & 62307 & 62283	0.02	20	12	6.5	7.5	4



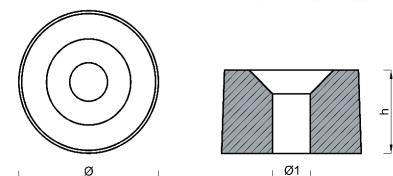
### ↳ Rondelle 40 cv / Washer 40 hp

Référence	Poids /kg	Ø	Ø1	h
62284 & 62480 & 62510	0.2	53	10	15



### ↳ Rondelle Ø 24 mm / Washer Ø 24 mm

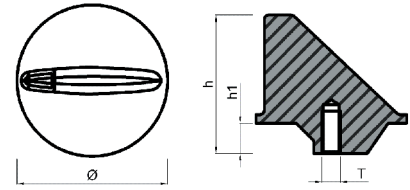
Référence	Poids /kg	Ø	Ø1	h
62285 & 62309	0.04	24	6	14



## Anodes moteur / Engine anodes

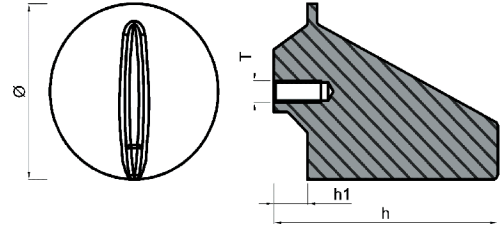
### ↳ Queue de carpe 40/60 cv / Skeg 40/60 hp

Référence	Poids /kg	Ø	T	h	h1
62286 & 62300 & 62460	0.45	90	7/16" UNC	82	18



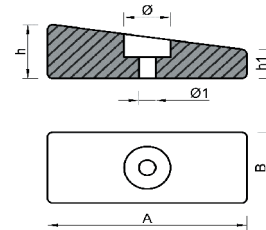
### ↳ Queue de carpe 80/115 cv / Skeg 80/115 hp

Référence	Poids /kg	Ø	T	h	h1
62288 & 62322	0.61	90	7/16" UNC	118	18



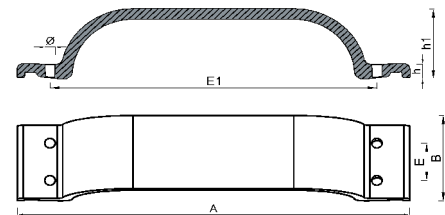
### ↳ Plaque embase 75 cv / MAG III / Outdrive plate 75 hp / MAG III

Référence	Poids /kg	A	B	Ø1	Ø2	h	h1
62289 & 62314	0.26	77	30	18	6,5	23	12



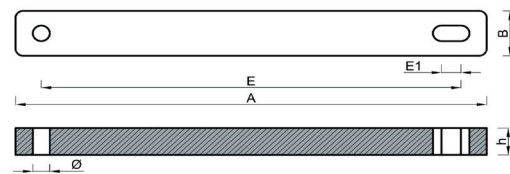
### ↳ Plaque 150 + / Plate 150 +

Référence	Poids /kg	A	B	Ø	E	E1	h	h1
62290 & 62303	1.09	284	60	8	30	240	10	60



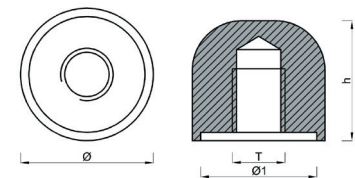
### ↳ Barreau 30/40 cv / Bar 30/40 hp

Référence	Poids /kg	A	B	Ø	E	E1	h
62291 & 62305	0.3	193	20	7	170	8	12



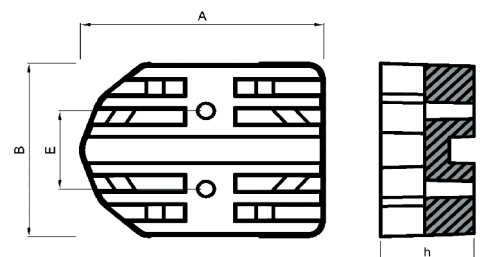
### ↳ Ecrou bouclier embase / Outdrive shield plate

Référence	Poids /kg	Ø	Ø1	T	h
62320	0.11	32	28	1/2-13 UNC	29



### ↳ Bloc / Block

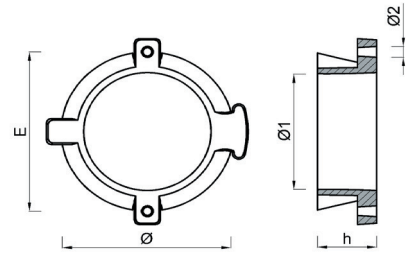
Référence	Poids /kg	A	B	E	h
62326	0.85	96	78	35	38



## Anodes moteur / Engine anodes

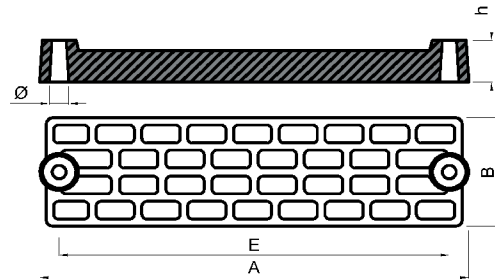
### ↳ Colerette arrière hélice / Small ring

Référence	Poids /kg	Ø	Ø1	Ø2	E	h
62327	0.24	72	53	5	75	25



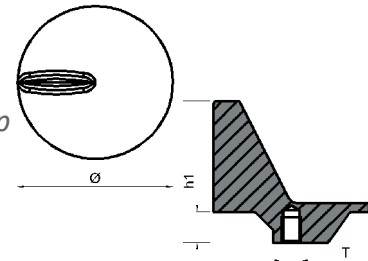
### ↳ Barreau alvéolé in bord / Inboard honeycomb bar

Référence	Poids /kg	Ø	B	A	E	h
62328	0.69	6.5	52	196	180	20



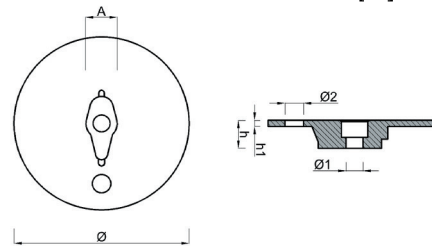
### ↳ Queue de carpe Alpha one 155 à 230 cv / Skeg Alpha One 155 to 230 hp

Référence	Poids /kg	T	Ø	h	h1
62330	0.38	7/16" UNC	92	82	18



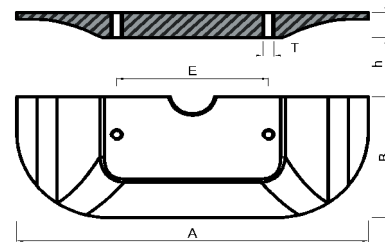
### ↳ Rondelle Hors Bord / Outboard washer

Référence	Poids /kg	A	Ø	Ø1	Ø2	h	h1
62331	0.31	20	112	11	12	18	4



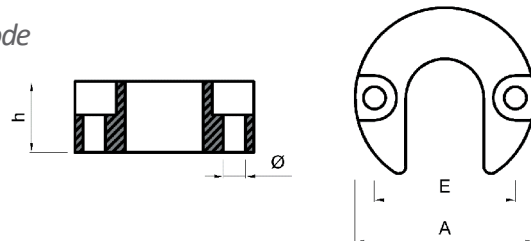
### ↳ Plaque Alpha one 155 à 230 cv / Plate Alpha one 155 to 230 hp

Référence	Poids /kg	A	B	T	E	h
62332	0.91	190	72	M6	82	16



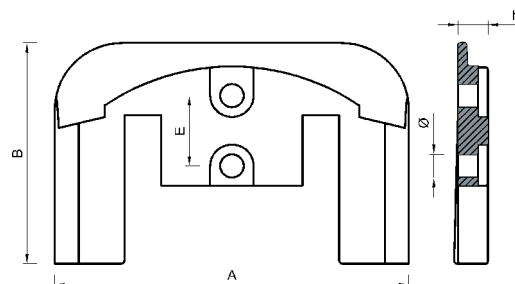
### ↳ Anode vérin Alpha one PM / Small Alpha One lift ram anode

Référence	Poids /kg	A	Ø	E	h
62333	0.16	48	6	38	19



### ↳ Plaque série Bravo / Bravo plate

Référence	Poids /kg	A	B	Ø	E	h
62334	1,04	187	113	11	35	15



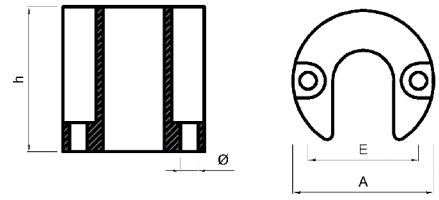
! Toutes les mesures sont en mm / All measurements are in mm



## Anodes moteur / Engine anodes

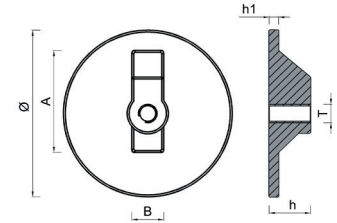
### ↳ Anode vérin Alpha one GM / Small Alpha One lift ram anode

Référence	Poids /kg	A	∅	E	h
62335	0.33	48	6	38	50



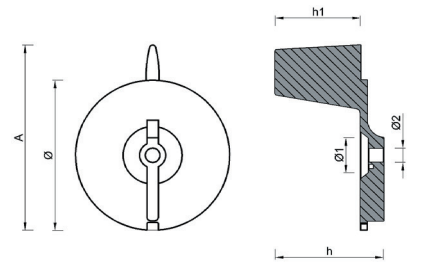
### ↳ Plaque hors bord / Outboard plate

Référence	Poids /kg	A	B	∅	T	h	h1
62301	0.31	55	16	90	7/16 - 14 UNC	22	5



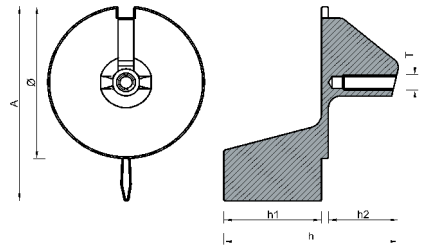
### ↳ Queue de carpe 25 cv av. 90 / Skeg 25 hp before 1990

Référence	Poids /kg	A	∅	∅1	∅2	h	h1
62302	0.28	116	94	22	9	66	52



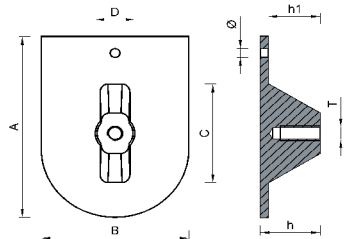
### ↳ Queue de carpe 25 cv ap. 90 / Skeg 25 hp after 1990

Référence	Poids /kg	A	∅	T	h	h1	h2
62304	0.385	114	90	M8	100	56	40



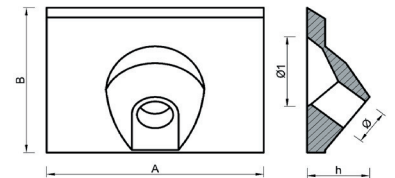
### ↳ Plaque Hors bord 20 cv / Outboard plate 20 hp

Référence	Poids /kg	A	B	C	D	∅	T	h	h1
62306	0.285	99	74	53	18	5	M8	30	26



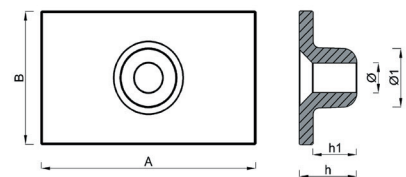
### ↳ Plaque 6 à 9.9 cv / Plate 6 to 9.9 hp

Référence	Poids /kg	A	B	∅	∅1	h
62308	0.031	42	30	7	15	11



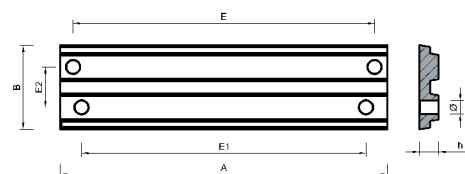
### ↳ Plaque moteur av. 87 / Engine plate before 1987

Référence	Poids /kg	A	B	∅	∅1	h	h1
62310	0.03	49	29	7	13	13	10



### ↳ Plaque hors bord 40/60 cv / Outboard plate 40/60 hp

Référence	Poids /kg	A	B	∅	E	E1	E2	h
62312	0.59	193	50	8	178	168	32	11

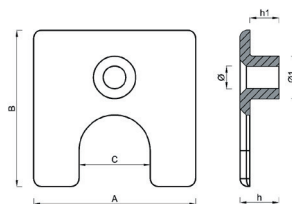


! Toutes les mesures sont en mm / All measurements are in mm

## Anodes moteur / Engine anodes

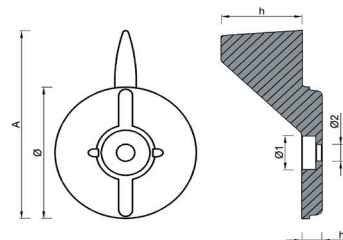
### ↳ Plaquette 4.5 / 7 cv / Plate 4.5 / 7 hp

Référence	Poids /kg	A	B	C	Ø	Ø1	h	h1
62316	0.05	50	48	22	7	13	12	9



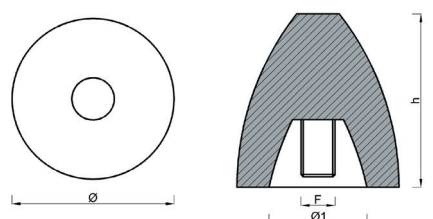
### ↳ Queue de carpe 60 cv / Skeg 60 hp

Référence	Poids /kg	A	Ø	Ø1	Ø2	h	h1
62317	0.51	116	94	22	9	66	52



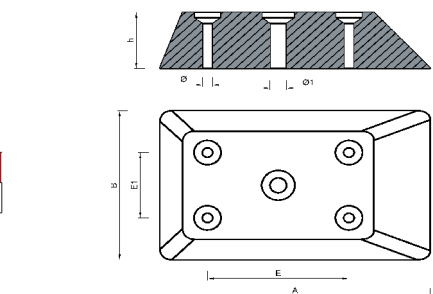
### ↳ Anode embout Perkins recharge / Anode embout d'arbre / Anode tip Perkins refill / Anode tip shaft

Référence	Poids /kg	Ø	Ø1	F	h
62340 & 62376	0.216	38	23	M8	40



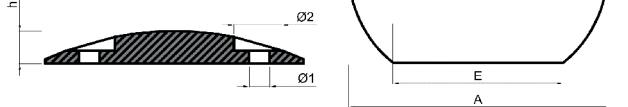
### ↳ Plaque hors bord / Outboard plate

Référence	Poids /kg	A	B	Ø	Ø2	E	E1	h
62562	1	125	80	12.5	8	68	35	20



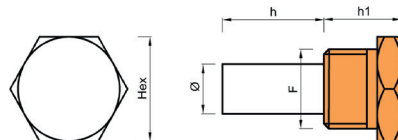
### ↳ Plaque safran / Rudder blade plate

Référence	Poids /kg	A	B	Ø1	Ø2	E	h
62358	0.16	75	54	6	15	50	10



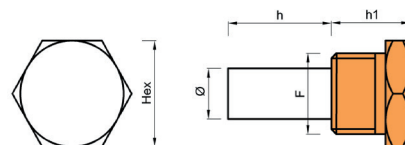
### ↳ Bougie 18 / 150 Couach / Plug 18 / 150 Couach

Référence	Poids /kg	Ø	Hex	F	h	h1
62350	0.066	16	21	M18 x 1.5	23	16



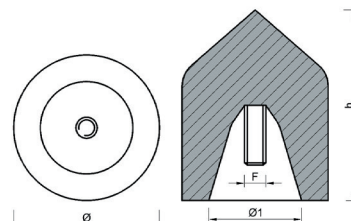
### ↳ Bougie 16 / 150 Nanni / Plug 16 / 150 Nanni

Référence	Poids /kg	Ø	Hex	F	h	h1
62360	0.04	10	21	M16	21	16



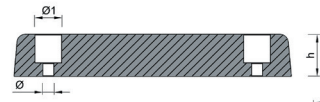
### ↳ Embout d'arbre GM / Shaft end fitting - large model

Référence	Poids /kg	Ø	Ø1	F	h
62378	0.74	55	35	M8	72



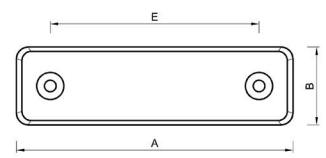
! Toutes les mesures sont en mm / All measurements are in mm

## Anodes moteur / Engine anodes



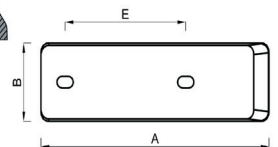
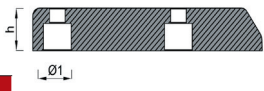
### ↳ Plaque Super America (FLAP) / Super America plate (FLAP)

Référence	Poids /kg	A	B	Ø	Ø1	E	h
62380	2.6	212	60	9	21	160	32



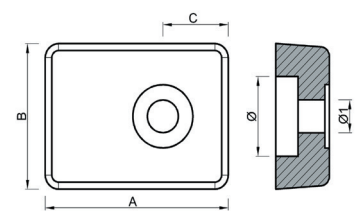
### ↳ Plaque St Tropez (FLAP) / St Tropez plate (FLAP)

Référence	Poids /kg	A	B	Ø	Ø1	E	h
62382	2.4	208	60	9	26	110	32



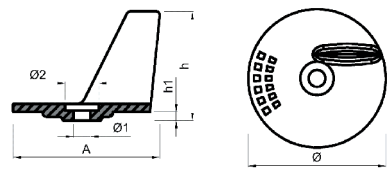
### ↳ Plaque 65/75/110/115 cv / Plate 65/75/110/115 hp

Référence	Poids /kg	A	B	C	Ø	Ø1	h
62392	0.086	41	31	15	17	7	12



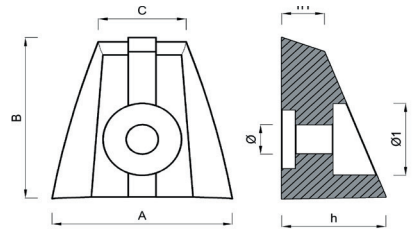
### ↳ Queue de carpe 20 à 30 cv / Skeg 25 to 30 hp

Référence	Poids /kg	A	Ø	Ø1	Ø2	h	h1
62394	0.15	82	70	8,5	17	52	4



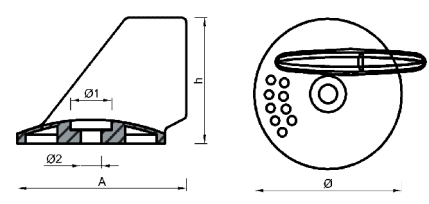
### ↳ Plaquette hors bord / Outboard plate

Référence	Poids /kg	A	B	C	Ø	Ø1	h	h1
62395	0.095	39	38	19	18	7	23	10



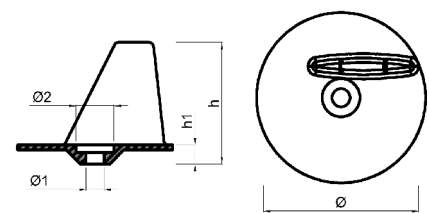
### ↳ Queue de carpe 55/65 cv / Skeg 55/65 hp

Référence	Poids /kg	A	Ø	Ø1	Ø2	h
62396	0.175	61	73	20	8,5	51



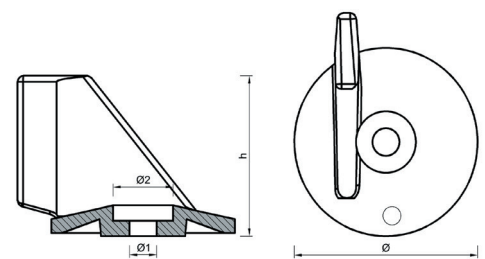
### ↳ Queue de carpe 115 cv / Skeg 115 hp

Référence	Poids /kg	Ø	Ø1	Ø2	h	h1
62397	0.305	100	10,5	22	67	9



### ↳ Queue de carpe 75/85 cv / Skeg 75/85 hp

Référence	Poids /kg	Ø	Ø1	Ø2	h
62398	0.185	61	9	20	52

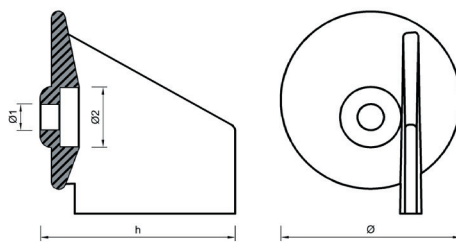


! Toutes les mesures sont en mm / All measurements are in mm

## Anodes moteur / Engine anodes

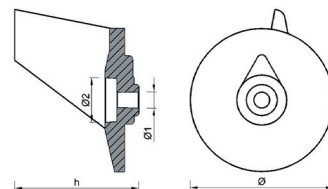
### ↳ Queue de carpe 25/40 cv / Skeg 25/40 hp

Référence	Poids /kg	∅	∅1	∅2	h
62400	0.115	47	7	16	52



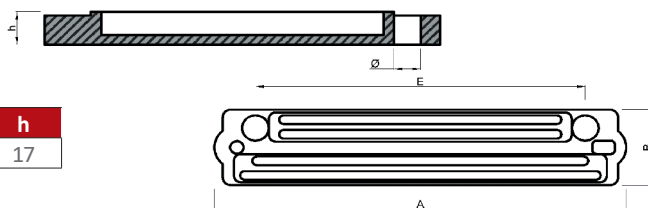
### ↳ Queue de carpe 25/50 cv / Skeg 25/50 hp

Référence	Poids /kg	∅	∅1	∅2	h
62401	0.13	60	7	18	52



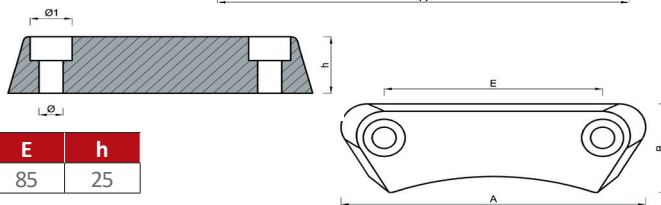
### ↳ Plaque 60/140 cv / Plate 60/140 hp

Référence	Poids /kg	A	B	∅	E	h
62402	0.58	200	40	12.5	160	17



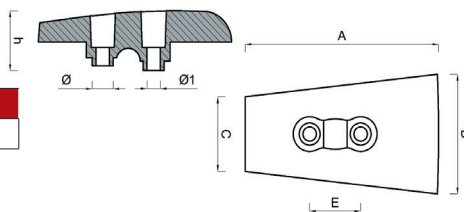
### ↳ Anode Volvo pour DPH / Volvo Anode for DPH

Référence	Poids /kg	A	B	∅	∅1	E	h
62406	0.47	118	39	8.5	16.5	85	25



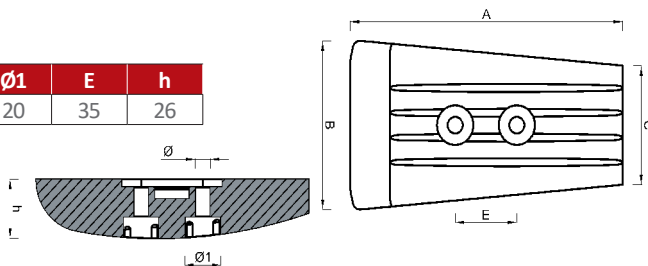
### ↳ Anode Volvo pour embase DPH / Volvo Anode for outdrive DPH

Référence	Poids /kg	A	B	C	∅	∅1	E	h
62408	0.82	129	76	47	14	9	35	10



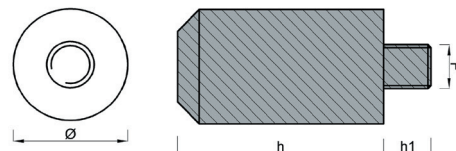
### ↳ Plaque Volvo / Volvo Plate

Référence	Poids /kg	A	B	C	∅	∅1	E	h
62409	1.36	150	86	58	8.5	20	35	26



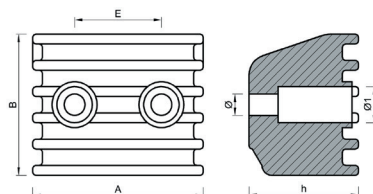
### ↳ Bougie 26 / Plug 26

Référence	Poids /kg	h	h1	F	∅
62414	0.17	42	11	M10	25



### ↳ Bloc / Bloc

Référence	Poids /kg	A	B	∅	∅1	E	h
62423	0.31	53	42	6	11	27	38

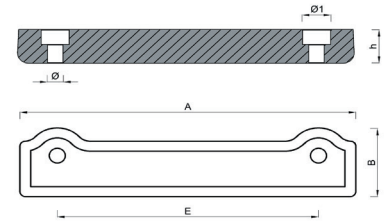


! Toutes les mesures sont en mm / All measurements are in mm

## Anodes moteur / Engine anodes

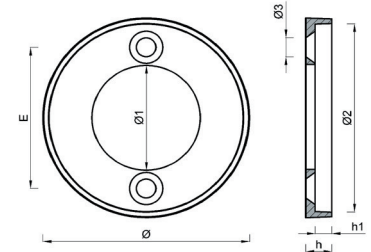
### ↳ Barreau 250/270/280 cv / Bar 250/270/280 hp

Référence	Poids /kg	A	B	Ø	Ø1	E	h
62416	0.84	187	42	9	16	145	20



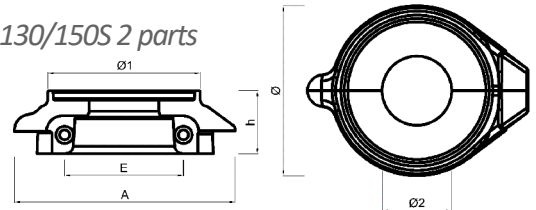
### ↳ Collier embase 100 / Outdrive ring 100

Référence	Poids /kg	Ø	Ø1	Ø2	Ø3	E	h	h1
62418	0.19	100	52	92	9.5	70	12	8



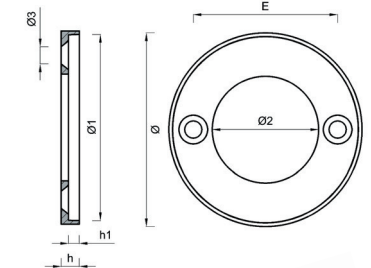
### ↳ Kit colerette embase 130/150S 2 pièces / Kit outdrive ring 130/150S 2 parts

Référence	Poids /kg	A	Ø	Ø1	Ø2	E	h
62419	1.59	140	107	44	97	75	41



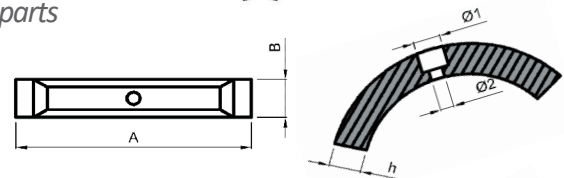
### ↳ Collier embase 200 / Outdrive ring 200

Référence	Poids /kg	Ø	Ø1	Ø2	Ø3	E	h	h1
62420	0.21	107	101	59	9.5	80	10	6



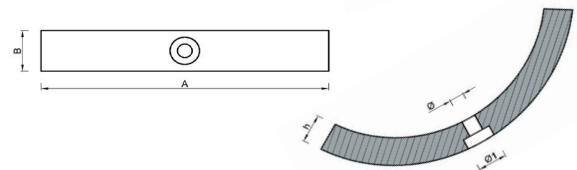
### ↳ Kit collier hélice 130/150S 3 pièces / Kit ring 130/150S 3 parts

Référence	Poids /kg	A	B	Ø1	Ø2	h
62421	0.31	83	15	5.5	9.5	12



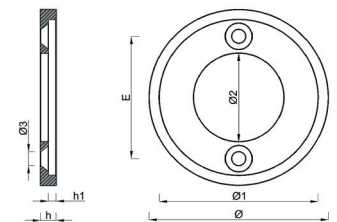
### ↳ Kit Volvo 3 parties / Kit Volvo 3 parts

Référence	Poids /kg	A	B	Ø	Ø1	h
62407	0.2	98	15	5	10	10



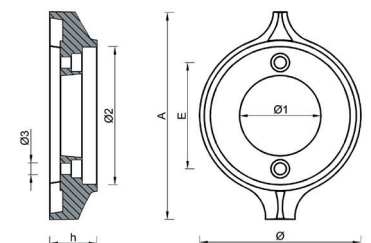
### ↳ Collier embase 250/270 / Outdrive ring 250/270

Référence	Poids /kg	Ø	Ø1	Ø2	Ø3	E	h	h1
62422	0.3	115	102	57	9	80	10	5



### ↳ Collier embase 280 / Outdrive ring 280

Référence	Poids /kg	A	Ø	Ø1	Ø2	Ø3	E	h
62424	0.93	155	120	61	104	9	80	35

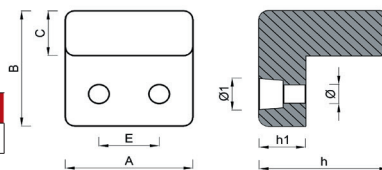


! Toutes les mesures sont en mm / All measurements are in mm

## Anodes moteur / Engine anodes

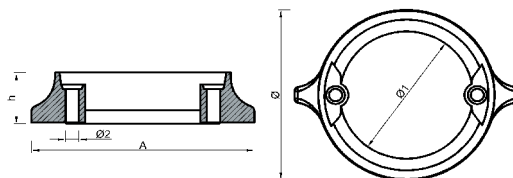
### ↳ Equerre platine 270 - trim / Corner plate 270 - trim

Référence	Poids /kg	A	B	C	∅	∅1	E	h	h1
62426	0.66	55	54	21	9	14	26	56	20



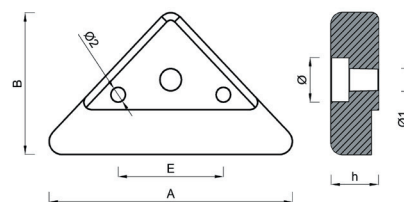
### ↳ Colerette embase Duo Prop / Outdrive Duo Prop ring

Référence	Poids /kg	A	∅	∅1	∅2	E	h
62428	0.665	142	113	84	9	90	35



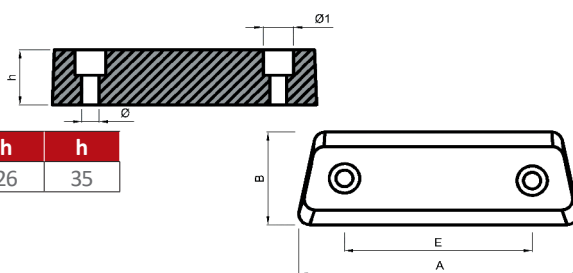
### ↳ Plaque Duo Prop / Duo Prop plate

Référence	Poids /kg	A	B	∅	∅1	∅2	E	h
62429	0.11	14	10	11.5	6.5	4.5	20	24



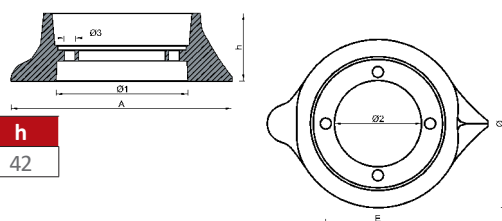
### ↳ Barreau embase Duo Prop / Outdrive Duo Prop bar

Référence	Poids /kg	A	B	∅	∅1	E	h	h
62430	0.76	127	44	7	14	86	26	35



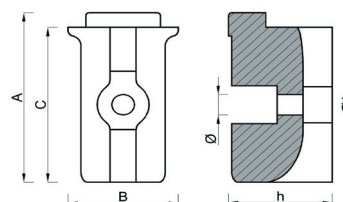
### ↳ Colerette embase Sail Drive / Outdrive Sail Drive ring

Référence	Poids /kg	A	∅	∅1	∅2	∅3	E	h
62432	0.945	138	105	82	54	6.5	64	42



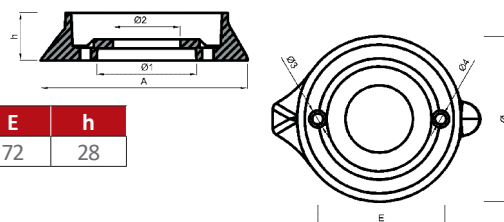
### ↳ Plaque Sail Drive / Sail Drive plate

Référence	Poids /kg	A	B	C	∅	∅1	h	h
62434	0.165	59	34	53	7	16	31	42



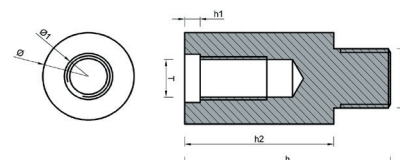
### ↳ Collier embase 120S / Outdrive ring 120S

Référence	Poids /kg	A	∅	∅1	∅2	∅3	∅4	E	h
62436	0.55	122	97	58	40	6.5	11	72	28



### ↳ Bougie diesel ∅ 16 mm / Diesel plug ∅ 16 mm

Référence	Poids /kg	∅	F	T	h	h1	h2
62438	0.047	16	7/16 - 14 UNC	M8	40	3	30

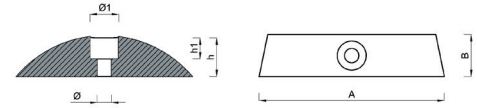


! Toutes les mesures sont en mm / All measurements are in mm

## Anodes moteur / Engine anodes

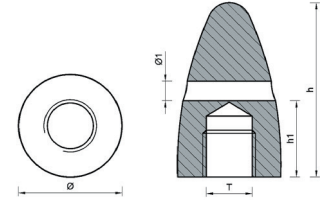
### ↳ 1/2 lune - hélice (par 2) / Folding prop crescent (by 2)

Référence	Poids /kg	A	B	Ø	Ø1	h	h1
62440	0.056	64	15	5	10	14	7



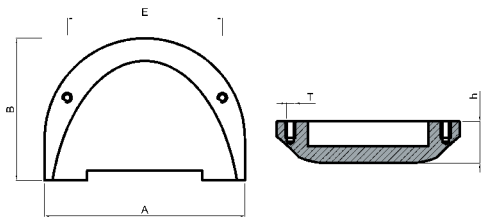
### ↳ Ecrou embout d'arbre / End fitting nut

Référence	Poids /kg	Ø	Ø1	T	h	h1	ØD
62444	0.3	37	9	M18	70	33	25/30
62446	0.3	37	9	M20	70	37	35
62448	0.51	47	9	M24	80	35	40



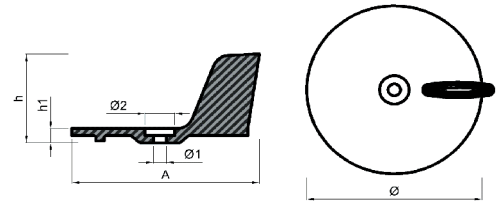
### ↳ Plaque supérieure / Upper plate

Référence	Poids /kg	A	B	T	E	h
62449	0.76	146	102	M6	113	35



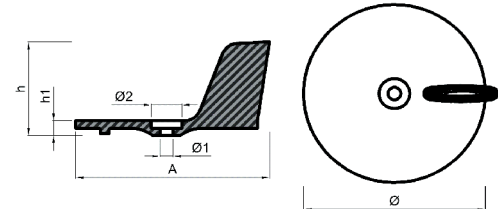
### ↳ Queue de carpe 28 cv / Skeg 28 hp

Référence	Poids /kg	A	Ø	Ø1	Ø2	h	h1
62462	0.24	105	95	7	16	49	9



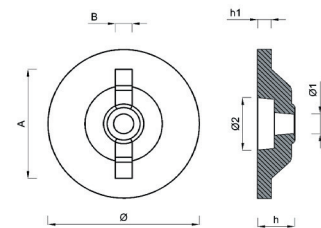
### ↳ Queue de carpe 25/30 cv / Skeg 20/50 hp

Référence	Poids /kg	A	Ø	Ø1	Ø2	h	h1
62464	0.25	105	95	8.5	16	54	12



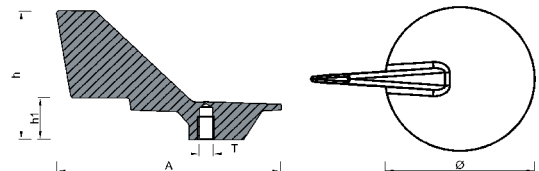
### ↳ Rondelle 9.9 cv / Washer 9.9 hp

Référence	Poids /kg	A	B	Ø	Ø1	Ø2	h	h1
62468	0.048	33	5	45	6	16	11	4



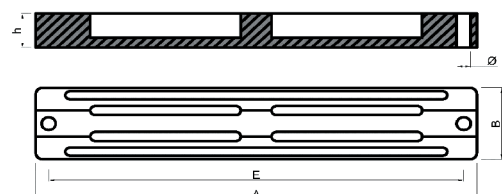
### ↳ Queue de carpe 60/90 cv / Skeg 60/90 hp

Référence	Poids /kg	A	Ø	T	h	h1
62470	0.425	130	90	3/8"	75	33



### ↳ Barreau 60/90 cv / Bar 60/90 hp

Référence	Poids /kg	A	B	Ø	E	h
62472	0.525	202	35.5	6.5	190	17

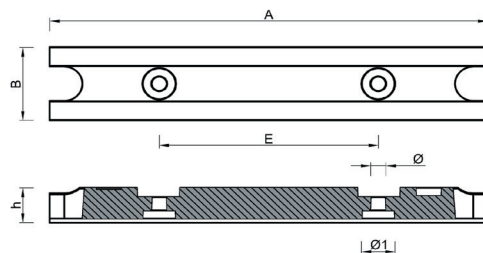


! Toutes les mesures sont en mm / All measurements are in mm

## Anodes moteur / Engine anodes

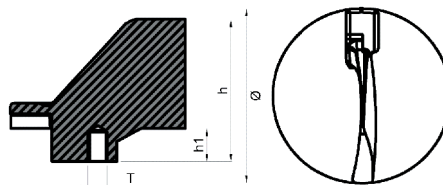
### ↳ Barreau 60/90 cv NM / Bar 60/90 hp NM

Référence	Poids /kg	A	B	Ø	Ø1	E	h
62473	0.5	202	36	7	15	100	17



### ↳ Queue de carpe 115 cv / Skeg 115 hp

Référence	Poids /kg	Ø	T	h	h1
62474	0.41	90	M10	83.5	18



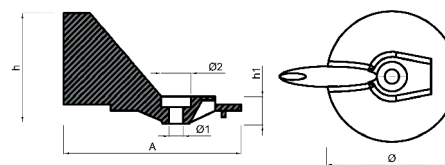
### ↳ Barreau 115 cv / Bar 115 hp

Référence	Poids /kg	A	B	C	Ø	E	h	h1
62476	0.965	203	46	10	6	182	51	17



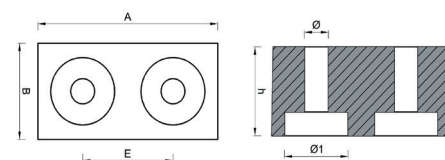
### ↳ Queue de carpe V4-V6 (Z-Drive) / Skeg V4-V6 (Z-Drive)

Référence	Poids /kg	A	Ø	Ø1	Ø2	h	h1
62482	0.59	140	100	11	23	88	10



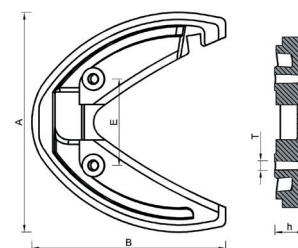
### ↳ Cube 115 cv / Cube 115 hp

Référence	Poids /kg	A	B	Ø	Ø1	E	h
62478	0.145	47	22	6	17	24	22



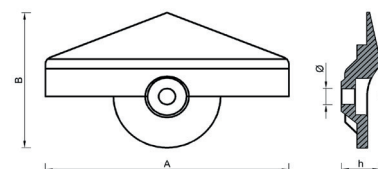
### ↳ Plaque V8 (Z Drive) / Plate V8 (Z Drive)

Référence	Poids /kg	A	B	T	E	h
62484	1.05	155	138	M8	64	33



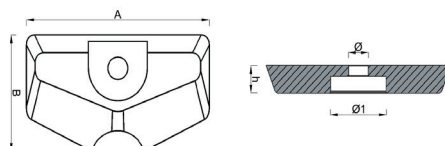
### ↳ Rondelle 9.9 cv NM ap.92 / Washer 9.9 hp NM after 92

Référence	Poids /kg	A	B	Ø	Ø1	h
62486	0.14	100	58	7	16	19



### ↳ Plaque Malta / Plate Malta

Référence	Poids /kg	A	B	Ø	Ø1	h
62488	0.064	60	34	6	18	8



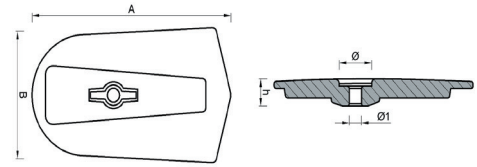
! Toutes les mesures sont en mm / All measurements are in mm



## Anodes moteur / Engine anodes

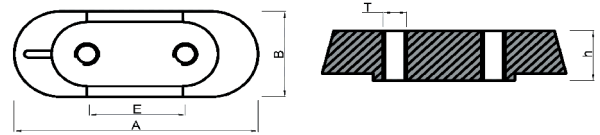
### ↳ Plaque 6/8 / Plate 6/8

Référence	Poids /kg	A	B	Ø	Ø1	h
62490	0.21	98	58	16	6	14



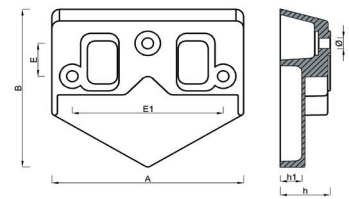
### ↳ Plaque Hors-Bord taraudé / Outboard plate threaded

Référence	Poids /kg	A	B	T	E	h
62491	0.083	64	25	M6	26	14



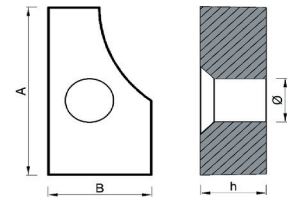
### ↳ Bloc V8 / Bloc V8

Référence	Poids /kg	A	B	Ø	E	E1	h	h1
62492	1.54	150	130	9	24	118	37	20



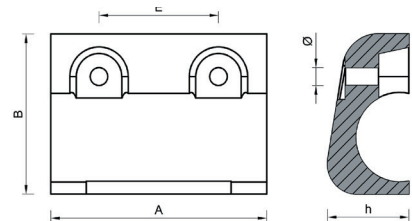
### ↳ Plaque Hord Bord PM / Outboard plate - Small model

Référence	Poids /kg	A	B	Ø	h
62493	0.036	27	15	7	9.5



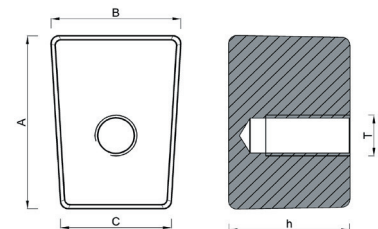
### ↳ Plaque NM / Plate NM

Référence	Poids /kg	A	B	Ø	E	h
62494	0.6	85	62	7	47	32



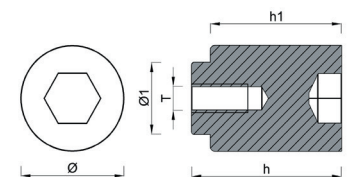
### ↳ Trapèze moteur HB / Outboard swedge

Référence	Poids /kg	A	B	C	T	h
62495	0.115	34	25	23	M8	23



### ↳ Bougie bloc 68V / Bloc plug 68V

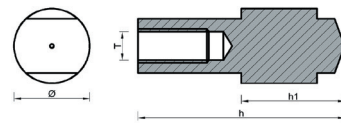
Référence	Poids /kg	Ø	Ø1	Hex	T	h	h1
62496	0.077	22	15	10	M6	32	28



## Anodes moteur / Engine anodes

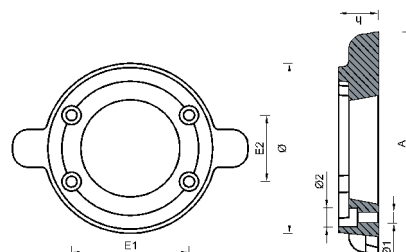
### ↳ Tige / Stem

Référence	Poids /kg	∅	T	h	h1
62497	0,795	11	M5	30	15



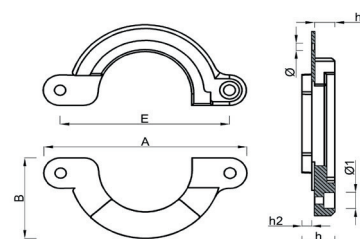
### ↳ Collier embase / Outdrive ring

Référence	Poids /kg	A	∅	∅1	∅2	E1	E2	h
62500	0,82	146	107	7	10,5	73	42	25



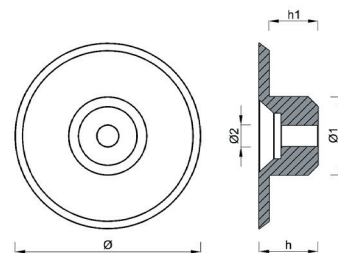
### ↳ Collier Sail Drive / Sail Drive ring

Référence	Poids /kg	A	B	∅	∅1	E	h	h1	h2
62501	0,79	148	68	8	14	123	23	14	7



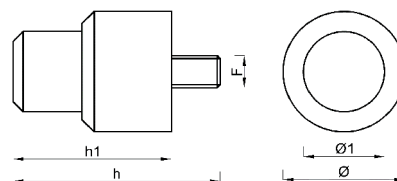
### ↳ Plaque / Plate

Référence	Poids /kg	∅	∅1	∅2	h	h1
62502	0,19	76	32	9	24	20



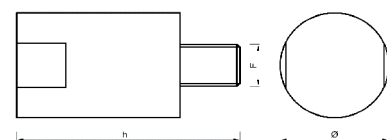
### ↳ Bougie 8 et 10 / Plug 8 and 10

Référence	Poids /kg	∅	∅1	F	h	h1
62504	0,14	30	20	M8	50	38



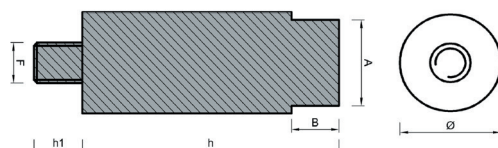
### ↳ Bougie 8 et 12 / Plug 8 and 12

Référence	Poids /kg	∅	F	h
62506	0,065	20	M8x11	41



### ↳ Bougie / Plug

Référence	Poids /kg	A	B	∅	F	h	h1
62498	0,12	17	9,8	20	M8	53	10

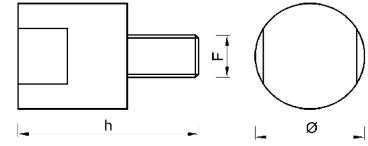


! Toutes les mesures sont en mm / All measurements are in mm

## Anodes moteur / Engine anodes

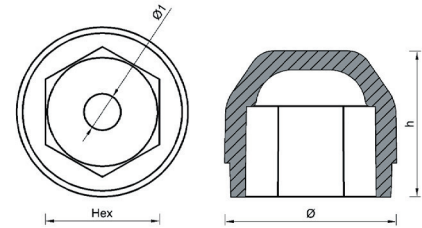
### ↳ Bougie GM / Plug large model

Référence	Poids /kg	Ø	F	Hex	h	h1
62508	0,04	12	3/8 BSP	17	43	18



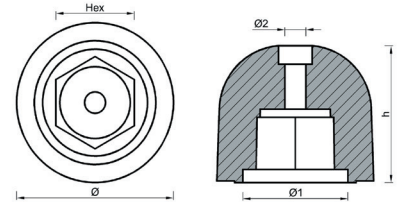
### ↳ NDA1 / NDA1

Référence	Poids /kg	Ø	Ø1	Hex	h
88114	0,70	70	15	46	60



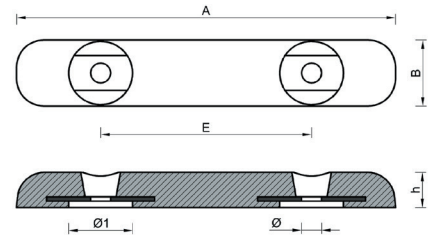
### ↳ NDA2 / NDA2

Référence	Poids /kg	Ø	Ø1	Ø2	Hex	h
88115	0,28	50	33	7	25	42



### ↳ Anode à visser NDA3 / NDA3 Screw anode

Référence	Poids /kg	A	B	E	Ø	Ø1	h
88116	6	421	74	234	22	71	40



### ↳ Les Kits Anodes / Anode Kits



62700  
Volvo 280



62702  
Volvo 280 DP



62704  
Volvo SX



62706  
Volvo 290



62708  
Volvo 290 DP



62709  
Volvo DPR



62710  
Mercurier Alpha One



62712  
Mercury / Mercurier Bravo



62714  
Mercury / Mercurier Bravo



62716  
Mercury / Mercurier Bravo

! Toutes les mesures sont en mm / All measurements are in mm



**SOROMAP**  
Peintures-Uernis



Groupe Soromap  
Efficiences sans limites

Des marques du Groupe Soromap



ZI de Beligon - 1, Rue Maurice Mallet  
17300 Rochefort sur mer  
+ 33 (0)5 46 87 84 80

 [contact@vmgsoromap.com](mailto:contact@vmgsoromap.com)  
[www.vmgsoromap.com](http://www.vmgsoromap.com)